



Braeburn Dar es Salaam
International School

SIXTH FORM PROSPECTUS

braeburn.com



Introduction

Braeburn Dar is proud to introduce its new sixth form, which students will be encouraged to develop into well-rounded and offers a challenging, supportive, and friendly environment mature individuals. The school offers a structured programme for students to achieve their full potential. The sixth form shares to support each of its sixth formers to apply for the course and the same caring family atmosphere as the rest of the school, university that they want to attend. The sixth form area boasts ensuring that newcomers settle in quickly. All students benefit a study room and a common room, along with all the facilities from regular meetings with their tutors who monitor and support expected from a modern international school: a competition-sized them in their studies. The sixth form also offers a wide range of swimming pool, playing fields for athletics, football, rugby, and stimulating extra-curricular activities such as the International cricket and a shaded basketball court. Internet access is readily Award, LAMDA, ABRSM exams, and Model United Nations, which available throughout the school. The science laboratories are well- are highly regarded in universities across the world. Braeburn's equipped for modern practical A level study. The school also has students are successful, not only academically but in being a range of highly experienced sixth form teachers, and learning prepared for the challenges of life. Like the rest of the school, takes place in small supportive classes where each student is the sixth form will be a supportive, friendly, and caring, and all guaranteed focused teacher attention.

Why come to Braeburn?

The sixth form offers a range of options so that all students can choose a course which they can both enjoy and achieve success in. A Level courses are offered in all of the sciences and mathematics. We also offer vocational qualifications in Business which enable students to gain entry into university. All of our teachers are graduates and have a great deal of experience in the British Curriculum.

Braeburn Dar's sixth form will be supportive, friendly and caring. We want all students to 'be the best that they can be' and we will work alongside individuals to help them achieve their true potential. Students will find support in their tutors who will meet with them as part of a tutor group every day as well as making time to have individual one-to-one mentoring conversations to monitor progress. Students will be helped with their university applications and given support in developing their study skills, time management and organisational ability, especially when they first arrive in the sixth form. This is essential in helping students to settle into life in the sixth form and in making a quick and effective transition.



University Application

In the Braeburn group of schools we have a great deal of experience in placing students in their preferred university. We have a central office that works with students across the group on their university applications. We have expertise and experience in applying to universities from around the world.

What course should I choose?

A Levels

We offer A levels in the following subjects:

- Biology
- Chemistry
- Mathematics
- Physics
- Computer Science
- Art
- English Literature
- French
- Geography
- History

A level subjects are demanding, but they are ideal for students who enjoy a traditional and academic approach to their studies. Students who enjoy A levels can expect to set aside 6 hours a week of extra study per subject. They enjoy reading around a subject and they do not get unduly worried about exams.

You can choose three or four different subjects, and therefore keep your options open. The standard of work at A level is at a very high level and students who have gone onto university have said they felt very well prepared and ahead of many others who are on their courses. The sciences have a practical component.

BTEC – (The Business and Technology Education Council)

We offer BTEC Business including units in Management; Marketing; Human Resource; Law and Accounts. We also offer Art and Design.

BTECs are ideal for students who want to focus on one area of study as they are sure of what they want to do. They can spend 18 hours a week learning about Business, which means they are much better prepared than students who have simply studied Business as an A level.

To get the most out of BTECs you must enjoy coursework. The course is continually assessed and there are lots of on-going deadlines. You must also enjoy practical work. For example you may be expected to give powerpoint presentations, lead workshops, write reports or perform in front of a crowd. You will find this a difficult course if you are shy and retiring, as there is lots of practical group work. As a result, it is vital that you are a good team player. In addition, you need to keep up-to-date with current developments as this course is firmly based in the contemporary world of work and not in the theory of books.

Combination of A levels and BTEC

Many of our students choose to combine BTEC with A levels. As both courses are at level 3, this is easy to do.

The advantage of combining these two courses is that students don't have too many exam papers to sit at the end of the two year course, but equally they don't have too much coursework either. These students find the two years more balanced and easier to cope with.



The Extended Curriculum

Our core curriculum is central to the sixth form and is compulsory for all students. Students have to attend a period a week for PSHE, which is aimed to support them in their studies and choices and to give them the opportunity to diversify and add a range of activities to their academic study. It also gets them to consider the world around them.

Research has shown that physical exercise helps to improve concentration and learning and one hour a week students will get the opportunity to try out a range of sports including:

- Football
- Swimming
- Basketball
- Athletics

In addition students are encouraged to choose Extra-Curricular Activities.

Activities that are available include:

- LAMDA (London Association of Music, Drama and Acting)
- ABRSM Music lessons
- International Award
- MUN
- World Scholars Cup
- Community service
- Roots and Shoots

Work Experience

An additional part of our core curriculum is work experience. All students are given the opportunity to do one week's work experience. This proves to be especially useful in applications to universities and in helping students to consider whether their selected career really does interest them.

Activities week

Each year, Braeburn Dar organises an activities week for the whole school giving students the opportunity to go abroad or take part in outdoor activities such as SCUBA diving.

Houses

Sixth form students remain members of the school house system and any new students will join one of the existing houses. Students are expected to join in the activities where appropriate and attend house meetings.

Leadership positions

Our sixth form students take an active part in the running of the school through the school council and through being active members of the prefect body. Along with making important decisions they play a major role in organising a wealth of social activities.

Assessment and Reporting

Our students receive feedback on their progress every half term so it is easy to identify and support anyone who is not achieving their potential. Progress is discussed with the form tutor and targets are mutually agreed and reviewed. This ensures that our students are closely monitored and supported.



Code of Conduct

As a member of the school community our sixth formers are bound by its rules and regulations. We expect all our sixth formers to be excellent role models.

At Braeburn we expect everyone to

- respect one another
- listen to each other
- support and encourage each other
- celebrate our differences
- tell the truth
- feel safe
- be punctual to class
- look for solutions not problems
- take care of the school equipment and the possessions of others
- take care of our environment
- focus on learning
- do our best at all times

Sixth form Study Room and Common Room

These only available for sixth formers.

Study periods are not free periods. We expect you to make the most of your time in school to study in them. Playing cards, watching films, sleeping or chatting are not acceptable.

The keeping of valuables in the study room is discouraged. You should be aware of security risks and make provisions accordingly. Lockable lockers should be used.

Electronic Devices

There are tablets available and internet access across the school. Nevertheless, most of our sixth formers bring their own laptops to work as we encourage you to use IT for both research and your written work.

However, if you are using the school resources, please note that you must not load any software, games or music onto the school laptops. Neither must you try to reconfigure or change the settings in any way. A full computer policy will be given to you at the start of the year and it is your responsibility to be familiar with this and to follow it at all times. If you are unsure of something, consult first. Misuse of school IT may mean you will be blocked from the internet.

Dress Code

Students must come dressed for work, otherwise termed, 'smart office'. Jeans, trainers, T-shirts, tracksuits, hats, shorts and strappy tops are unacceptable. Shirts should be tucked in and trousers should not be sagging. Suitable footwear such as black leather shoes should be worn. Trainers and flip-flops are not acceptable.

All students are expected to wear appropriate kit for Physical Education.

This should give you flexibility in outfits with regard to colour and design but retains the standards of presentation accepted and expected in the business world. The discrete use of jewellery is allowed but you are discouraged from bringing expensive items to school.

School Day

There are four lessons in the morning and two lessons in the afternoon followed by ECA time.

We place a high value on punctuality to lessons and attendance to school.

Students who do not attend school for at least 90% of the time, will not be allowed to sit their exams.

The Home - School Agreement

The sixth form will provide for you:

- Initial and continuing guidance about the courses to meet your needs.
- Appropriate teaching, setting and marking of home learning regular monitoring and discussion about your progress.
- Facilities and resources for study and the encouragement to acquire sound learning skills and habits.
- Careful and comprehensive advice and support about higher education and careers.
- A willingness to talk with yourself and your parents both at regular published meetings and whenever you request an appointment.
- A genuine concern for the welfare and development of all students. No student should ever feel that there is no-one on the staff to turn to.

What we ask of you in order to ensure your own development and success:

- You will commit to working to the best of your potential and seek help as and when it is needed.
- Respect for others and their property at all times.
- You treat the common area with due care.
- You behave in an appropriate way at all times and act as a role model to younger students.
- A high rate of attendance with an absolute minimum of absences. Holidays should not be taken during term time and all absence should be covered by a letter from your parent or guardian which should be handed to your tutor on the day of your return.
- Prompt attendance at all timetabled classes, tutorials, assemblies and core activities, including the fulfilment of all additional commitments undertaken eg. work placements and projects, community service and sport.
- A real effort to maintain good standards of work and meet the course requirements.
- The completion of all homework, projects and assignments to set deadlines.
- The systematic use of study time to follow up and consolidate work covered in class.
- You dress in a manner which is suitable for work.



How do I get a place in the sixth form?

You need to apply

- You will be interviewed.
- You should receive a letter by the end of May letting you know whether your application has been successful.
- You will be invited to the sixth form taster week in the middle of June.
- You will be invited in for an enrolment interview at the end of August once you have your results. Your choice of course will be finalised at this interview, as it will be dependent on your results.
- You will be invited to some induction days at the start of the school year so that you can meet other new students and settle into the school.

At your enrolment interview

You will be asked for a deposit. This will be refunded when all books have been returned and the leaving form signed.

You will be placed on a six week probationary period where your choice of subject and your ability to cope are closely monitored. You will be supported in making changes if you feel you have made the wrong choices.

Entry Requirements

To gain a place at Braeburn you will need to show:

- an excellent attendance and punctuality record
- a willingness to lead by example
- a willingness to learn
- a desire to contribute to the life of the whole school

You need to fill in an application form and have an interview with the Head teacher and you need to fulfil the grade requirements of the courses that you want to register for.

FAQs

What does BTEC stand for?

The Business and Technology Education Council (BTEC) was formed in 1983 through a merger of:

- Business Education Council (BEC)
- Technician Education Council (TEC)

The course is administered by Edexcel, a British registered exam board and BTECs are recognised worldwide.

What point scores do the grades relate to?

Many of the UK universities offer admission based on an overall point score. Eg. They may give you an offer with 110 points. If you are taking A levels you could gain a place with two B grades and a C grade OR one A grade, two C grades. If you are studying three of the six unit BTEC courses you would need to get one distinction and two merits or if you were doing a combination of the two courses you may get a distinction from the BTEC course and two grade Cs in your A levels.

A Level Grade	BTEC 6 Unit Award	Point Score
A*	Distinction (D*)	56
A	Distinction (D)	48
B		40
C	Merit (M)	32
D		24
E	Pass (P)	16

Which exam board do we use?

For A levels we use Cambridge International Examinations (CIE). For more information please refer to the website on www.cie.org.uk and www.edexcel.com

For BTECs we use EDEXCEL. For more information please refer to the website on: www.edexcel.com

Why study a two year A level or BTEC course?

Once you have studied a two year course at Braeburn Dar you will be able to gain acceptance onto a degree course without needing to enrol on a foundation course first.

How shall I choose what subjects to study?

Firstly, choose subjects that you are good at and that you enjoy as you will spend a considerable time in the sixth form studying them. However, you must also bear in mind your future career. Look at university prospectuses and careers leaflets to ensure that you have the correct choice of subjects for what you want to do later on.

A minimum of three A levels or three 6 unit BTECs are normally required for a university degree course. You can get onto an HND course with one A level in certain subjects.

You can have a mixture of full A levels and BTECs.

Can I change my sixth form course?

You can change your course in the first six weeks, subject to availability, after a discussion with the Deputy Head.

After half a term, however, you will be committed to stick with the course that you have chosen.

How much home learning will there be?

A lot! Expect to do a minimum of six hours per subject, per week. You will get time during the week to work in the library or the study room but you will still need to build in at least a couple of hours at home six days of the week.

In conclusion

We hope that our sixth form students will have a special relationship with each other and with staff and that the right spirit will enable you to keep everything in perspective. We trust you will be able to hold on to this and that your time in the sixth form will be one that you treasure now and in the years to come.

How is the Sixth form Different to KS4

Lessons

Expect a different style of teaching and learning. We hope that you will become more independent as learners. We will support you in researching and discovering information for yourself. For both BTEC and A level, you may need to prepare presentations for the lesson and you will find there will be more discussion than you were previously used to. In BTEC lessons you will be showing your understanding through 'doing' a lot more.

Private study

Your teachers will ask you to follow up class work with notes and assignments. How and when you choose to do this work will be up to you but deadlines must be kept.

You should, however, make sure that private study lessons during the day are used for study and not recreation.

There are two options as to where you might work:

- in the sixth form study room
- in the library

Equally you should be disciplined in working during the evenings. You will need to spend a minimum of six hours per week on each A level subject or four hours on each 6 unit BTEC that you have taken.

Daily Programme

The school day begins with registration in form rooms at 8.00am. Classes for the rest of the day are as follows:

Time	Activity
7:25am – 7:40am	Registration
7:40am – 8:40am	Lesson 1
8:40am – 9:40am	Lesson 2
9:40am – 10:00am	Break
10:00am – 11:00am	Lesson 3
11.00am – 12.00pm	Lesson 4
12:00pm – 12:45pm	Lunch
12:45pm – 1.45pm	Lesson 5
1:45pm – 2:45pm	Lesson 6
2:45pm – 4:00pm	ECAs

A level or BTEC (Business and Technology Education Council)

Choosing A level or BTEC Subjects

Students are advised to use the following criteria upon which to base their final selection of A level subjects:

- Academic interest and ability.
- Personal interest, skills and aptitudes.
- Entry requirements for degree courses or careers.
- Whether you prefer continuous coursework or exams as the key tool of assessment.
- Whether you prefer working on your own or working with others.

Do not choose an A level or a BTEC

- Because of a teacher's personality or because a close friend has selected a particular subject.
- Because of parental pressure.
- If you are not prepared to work very hard. Each 'A' level subject requires at least 6 hours of work every week for home study.
- Unless you are self motivated and ready to study at times without direction.

Before you apply

- If you decide that you wish to study A levels or BTECs it is important that you have a solid grounding at IGCSE (or equivalent) on which to build.
- A levels are much more difficult than IGCSE. They are more intensive and more demanding. They involve more reading and writing plus the ability to analyse information and apply knowledge.

- BTECs need real commitment and organisational skills to cope with all the different deadlines.
- At Braeburn Dar we would also expect students to show high standards of work and behaviour and to be a link between the school and the parents.

Bill Gates says...

"Life is not fair – get used to it

You won't make \$40,000 a year, right out of high school. You won't be a vice-president with a car phone until you earn both.

If you think your teacher is tough, wait till you get a boss.

If you mess up, it's not your parent's fault, so don't whine about your mistakes, learn from them.

The world won't care about your self- esteem. The world will expect you to accomplish something BEFORE you feel good about yourself.

Be nice to nerds. Chances are you'll end up working for one."



Art and Design

Why Study Art in our Sixth Form?

Art and Design students at Braeburn are independent, inquisitive and creative individuals who have made our department a positive lively environment. Our students learn principally through experimentation. They have the chance to explore a variety of disciplines such as 2D media including drawing, painting, printmaking and collage as well as 3D media including wire, card, plaster and found materials. They get the chance to explore design disciplines such as illustration, graphic design and photography. Our students have two qualifications to choose from, so think carefully about your choice.

Career Pathways

Art boasts many interdisciplinary skills that are valued by universities and future employers, including creativity, experimentation, research, visual awareness, determination, time management, problem solving and the ability to 'see' the world around them. Our courses prepare you for many of the Art and Design based careers out there today including:

Fine Artist, Teacher

Designer - furniture, textiles, fashion, jeweller, toy, computer graphics, product, industrial and ceramicist, graphic. Illustrator - novelist, animator. photography - photojournalist, cinematographer. Theatre, TV and Film – special effects, lighting, set, make-up artist, production designer for television, arts director, prop maker and costume, Architecture - architect, interior designer, restoration planner. Historian - writer, curator, museum educator, gallery conservator, archaeologist, community arts worker

International A Level Art and Design

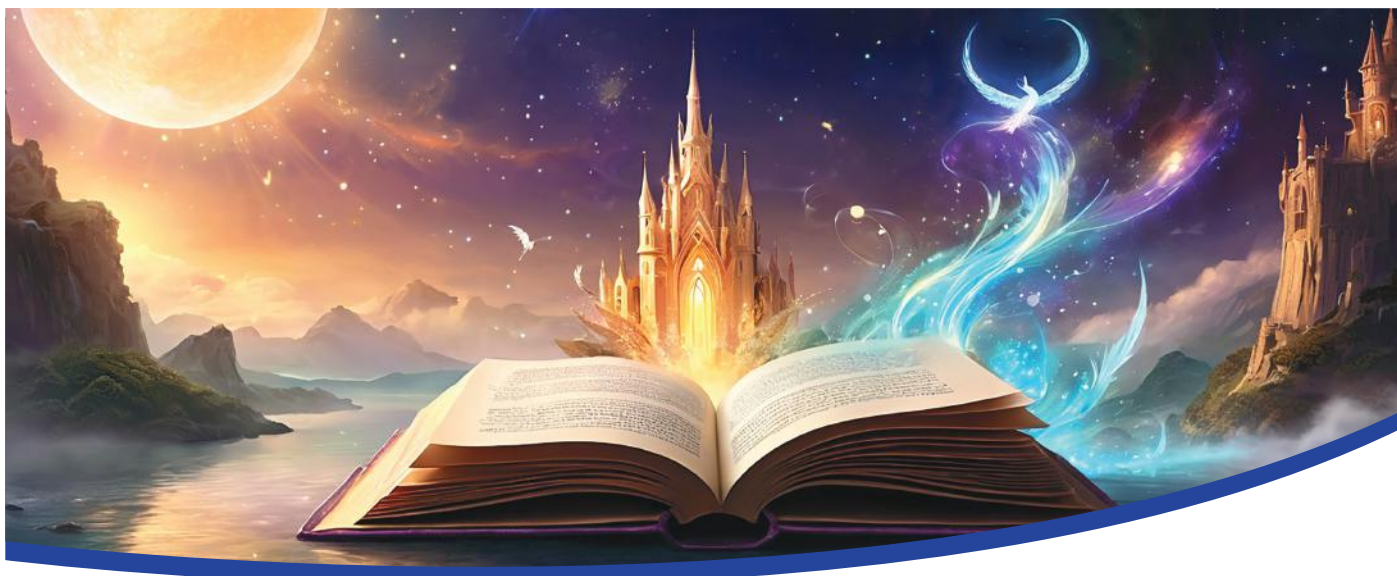
Length of course: 2 Years.

Entry requirements: Grade B is required at IGCSE in both Art and Design and English Language to gain admission into this course. An interest in Art and Design and enjoyment of painting and drawing is essential. Dedication, enthusiasm and timekeeping are also important attributes.

Course Structure:

There are three components to CIEs Art and Design International A Level.

Component	Details	%
1	Component 1: Coursework A large practical coursework project set by the school	25%
2	Component 2: Personal Investigation You investigate a theme, idea, concept or process that is personal to you. There are two parts to the investigation: • practical work • written analysis.	50%
3	Component 3: Externally set assignment A project set by the exam board and completed in a 15 hour exam.	25%



English Literature

Length of Course: 2 Years

Entry requirements: Five A*- C grades with a B grade in IGCSE Literature and Language.

Why Study English Literature at A Level?

If you enjoy reading and find you can't put a good book down then English Literature is the subject for you! Not only will it open the door to a wide range of exciting careers from journalism to law, but it will also provide you with important life skills, encouraging you to think for yourself; to question what you read and analyse situations and characters. You will study a wide range of texts from plays to poetry, short stories to novels, from times gone by to the present day and in places far away, to settings on our doorstep. Literature is relevant and it is fun, but there's a lot of reading and writing involved! The course demands that you write regular essays, stories and poetry; that you visit theatres; that you research work in the library; and that you enjoy discussion and role play. Above all, although you are examining other authors' writing skills, you need to be a creative thinker yourself.

The Course

You will be expected to understand a range of texts in relation to your own wider reading. You will also need to comment confidently on language and structure, building on the strategies you learnt for your IGCSE Literature examination. You will examine literature within a firm social historical and cultural context. In the exam you will have a choice of two questions for each text: an essay question and a passage based question. All questions will require you to demonstrate a response showing understanding of the text and an informed independent opinion and to communicate these clearly and appropriately. Context questions require that you relate the extract to the text as a whole and that you comment on the use of narrative methods and on the style of language.

Assessment

Paper	Description	Duration	%
1	Drama and Poetry Candidates answer two questions: one question from Section A: Drama and one question from Section B: Poetry.	2 hours	25%
2	<ul style="list-style-type: none"> Prose and Unseen Candidates answer two questions: one question from Section A: Prose and one question from Section B: Unseen. 	2 hours	25%
3	Shakespeare and Drama Candidates answer two questions: one question from Section A: Shakespeare and one question from Section B: Drama.	2 hours	25%
4	Pre- and Post-1900 Poetry and Prose Candidates answer two questions: one question from Section A: Pre-1900 Poetry and Prose, and one question from Section B: Post-1900 Poetry and Prose. Candidates respond to both a poetry question and a prose question.	2 hours	25%

Career Pathways

As well as being enjoyable in its own right, A Level English Literature is a useful qualification for entry on any degree course. Professions such as accountancy, journalism, law and teaching welcome students with this qualification.



French

Length of Course: A level - 2 Years

Entry requirements: IGCSE: Five A*- C grades with a B grade in IGCSE French.

Why Study French at A Level?

Studying a language and taking advantage of the many recent developments which focus more on the living and practical daily use of language, is rewarding, challenging and fun. French is spoken in many nations worldwide and knowing another language opens a lot of doors to many people. Having a second language is an important element of business success, future prosperity and progress. At A level, students taking French will have a wider choice of options at university. In the future, possession of foreign language skills will be a major consideration for employers when selecting candidates for jobs.

The Course

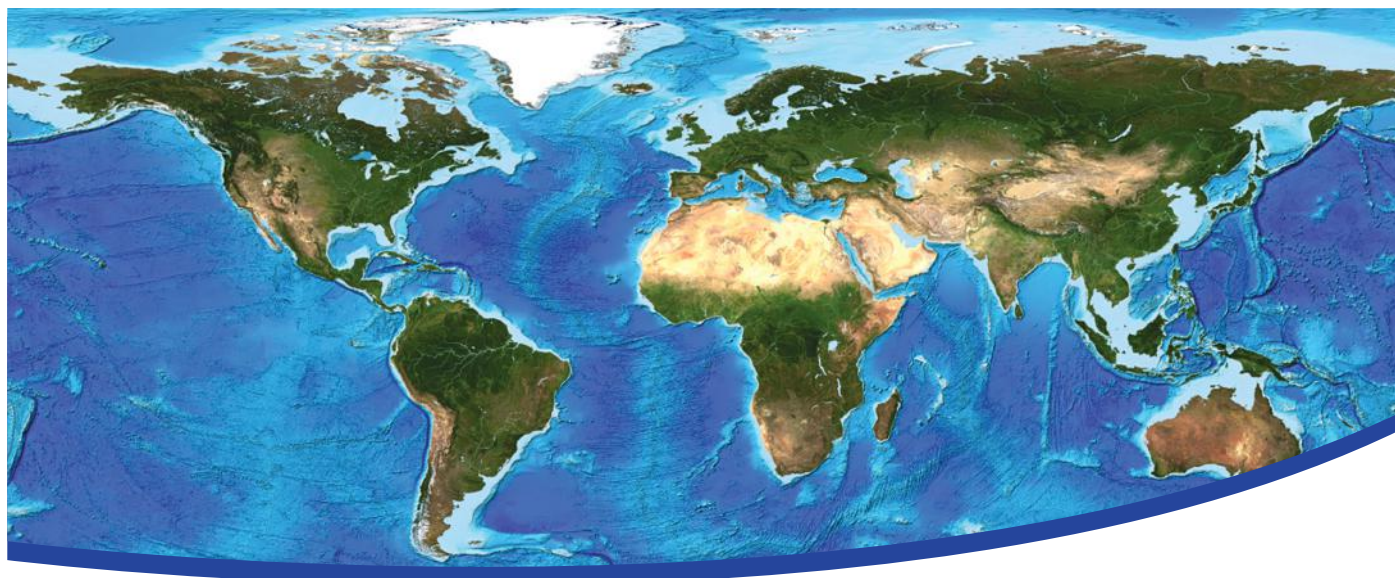
Over the course of the two years, students will read, watch and analyse a minimum of two texts. They will improve their linguistic competence and their knowledge of contemporary society by responding to texts written or filmed in another language and drawn from a variety of sources such as magazines, newspapers, films, reports, books and other forms of extended writing. They will also develop their speaking and their writing in another language. They will feel confident in selecting information and presenting their arguments and ideas logically.

Assessment

Paper	Description	Duration	%
1	Listening, reading and translation	2 hours	40%
2	Written response to works and translation	2 hours and 40 minutes	30%
3	Speaking (internally conducted and externally assessed)	30 minutes	30%

Career Pathways

A qualification in French is highly regarded for higher education or for the world of work. Career options include work in the diplomatic service, hospitality, tourism, translation and interpretation, music industry, media, law, public relations, business, finance and banking, travel and teaching.



Geography

Length of Course: 2 Years

Entry requirements: Five A*-C grades with a B grade in IGCSE Geography and a C grade in Maths

Why Study Geography?

From the moment you are born to the moment you die you will spend your life on the planet earth. A Level Geography will help you to understand more about that earth. On this course you will learn about the earth's surface and about how it is constantly changing. You will study different environments and hopefully learn to appreciate how and why these environments must be protected. You will also learn about the world's population and investigate the main areas of human activity. In particular, you will learn about the impact that man has had on the natural world. This course is a big step up from IGCSE so confidence in your knowledge is crucial.

The Course

The course consists of the following topics:

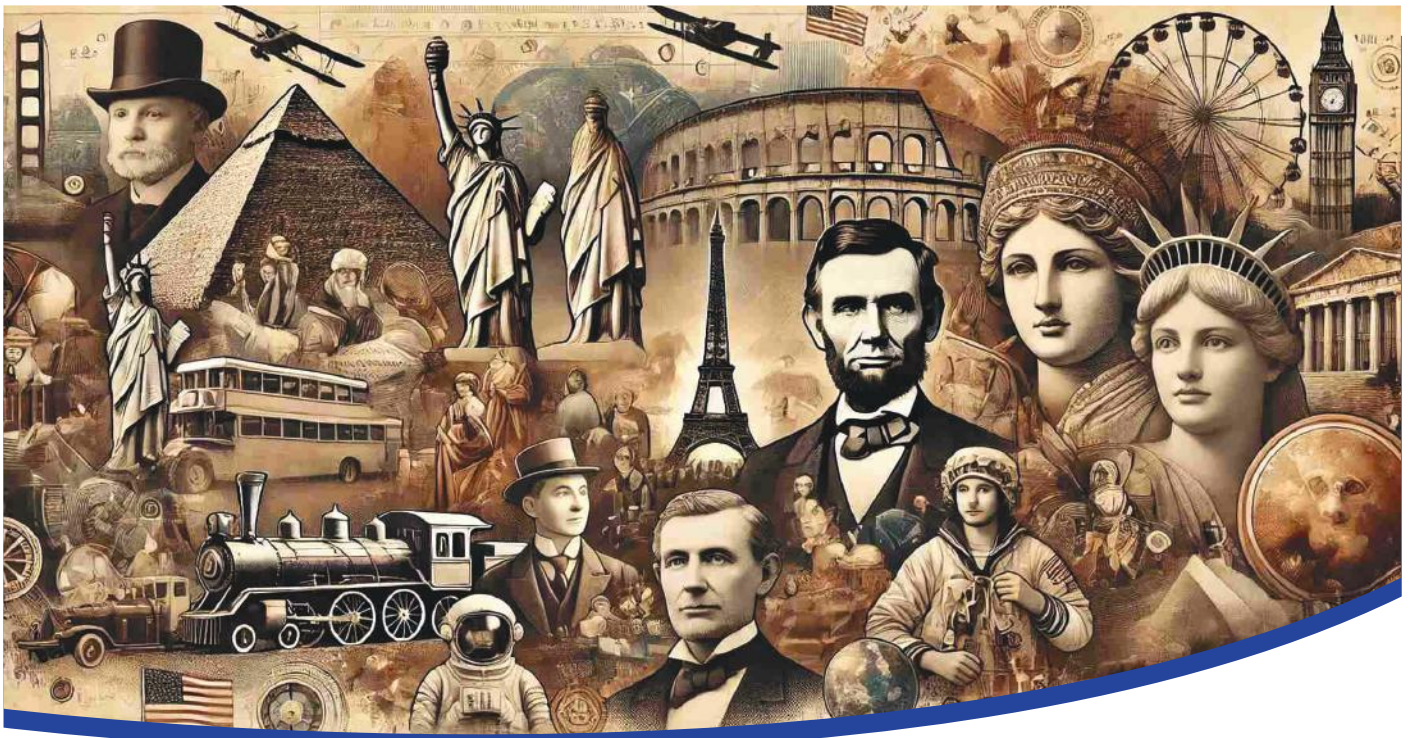
- Hydrology and fluvial geomorphology
- Atmosphere and weather
- Rocks and weathering
- Population
- Migration
- Settlement dynamics
- Coastal environments
- Tropical environments
- Hazardous environments
- Hot arid and semi-arid environments
- Production, location and change
- Environmental management
- Global interdependence
- Economic transition

Assessment

Paper	Description	Duration	%
1	Core Physical Geography: Section A: Three data response questions Section B: One structured question from a choice of three	1 hour 30 mins	25%
2	Core Human Geography: Section A: Three data response questions Section B: One structure question from a choice of three	1 hour 30 mins	25%
3	Advanced Physical Geography Options: Candidates answer questions on two of the optional topics. Each topic consists of one structured question and a choice of essay questions	1 hour 30 mins	25%
4	Advanced Human Geography Options: Candidates answer questions on two of the optional topics. Each topic consists of one structured question and a choice of essay questions.	1 hour 30 mins	25%

Career Pathways

Many employers look very favourably on geography. A good A Level result will tell them that you know about the world, that you are competent in maths and English, that you have experience in graphical presentation and the handling of data, and that you have an inquiring and analytical mind. There is a wide range of career opportunities available, including: business, finance, management, administration, environmental work, information services, education, social services, leisure and tourism.



History

Length of Course: 2 Years

Entry requirements: Five A*-C grades with a B grade in IGCSE History or English.

Why Study History at A Level?

'Those who cannot remember the past are condemned to repeat it.' George Santayana.

In a rapidly changing world, no understanding of the present can be complete without a strong understanding of the past. History enables students to gain a sense of belonging and an awareness of the world in which we live. This ultimately develops responsible citizens who have a greater understanding of their place in society.

The Course

A Level History encourages students to study independently, to research and to read widely.

Furthermore, it enables students to write fluently, to develop the capacity to formulate and justify their ideas. Due to the nature of the course, a high level of subject knowledge is vital at A Level History.

Assessment

Paper	Description	Duration	%
1	Source Study: League of Nations	1 hour	20%
2	Essay Paper Two essays on a choice of three topics: • The French Revolution • The Russian Revolution • Origins of World War 1	1 hour 30 mins	30%
3	Source Study: Origins of the Cold War	1 hour	20%
4	Essay Paper Two essays on a choice of three topics: • Soviet Union • Fascist Italy • Nazi Germany	1 hour 30 mins	30%

Career Pathways

History is a highly regarded subject in both further education and the world of work.

Students develop a range of skills which employers look for, from independent thinkers who are able to present coherent, well-structured arguments, to those that can analyse evidence. Professions such as law, journalism, politics, international relations, archaeology, museum education officer, museum curator careers in historic buildings or monuments and teaching and teaching value students with A Level History.



Biology

Length of course: 2 Years.

Entry requirements: Five A*- C grades with at least B grades in IGCSE Biology and Mathematics. At least a C grade in IGCSE Chemistry is also desirable.

Why Study A Level Biology?

Biology is the science of life and at no time in history has Biology been so visible, so important to human life and the future of our planet. Biology is featured in newspapers, magazines and television on a daily basis: from cells (the building blocks of life), to the global effects of deforestation.

To understand what defines a living thing, how and why it functions as it does is an amazing journey called biology – you can begin here!

The Course

The course focuses learners on development of transferable lifelong skills relevant to the increasingly technological environment they find themselves in. The objectives of the course emphasise:

- knowledge with understanding
- handling information and solving problems
- experimental skills and investigations Assessment

Paper	Description	Duration	%
1	Multiple Choice	1 hour	15.5%
2	Structured questions	1 hr 15 mins	23%
3	Practical paper	2 hours	11.5%
4	Structured and essay questions	2 hours	38.5%
5	Structured on planning, analysis and evaluation	1 hr 15 mins	11.5%

Career Pathways

A biology qualification is a valuable asset for many fields of work and higher education. Career options range across nursing, medicine, dentistry, conservation work, veterinary science, teaching, physiotherapy, radiography, psychology, forensic science, farming, museum work, agricultural engineering and biotechnology.



Business Core - Subsidiary Diploma

Length of Course: 2 Years

Entry requirements: Four IGCSE grade Ds and above.

What is this 360 guided learning hours BTEC course equivalent to? One A level.

Why Study BTEC Business?

This course in Business gives students an overall foundation from which to study a range of business modules at university. It provides a basis in understanding the theory behind businesses, gives students the opportunity to study a range of local and international businesses and develops skills in human resource management, people in organisations and operations management as well as the external influences affecting businesses. Students put their knowledge into practice when they compete against each other to make the most sales, once they have started their own business. Students also explore the objectives and strategies which are employed by successful business organisations through this practical and work-related vocational course.

How will I learn?

The course is about the practical development of business knowledge and skills. You learn, and are assessed, by doing. This involves you in researching information, working with others, and presenting your material effectively. While there is some formal teaching, the emphasis is on individual and group work using assignments and realistic work situations. You will learn by completing projects and assignments that are based on realistic workplace situations, activities and demands. As a result you will develop a range of specialist skills and knowledge.

How will I be assessed?

You are continuously assessed throughout the course. For each unit international standards are laid down, in which you have to show you are competent. Your tutors will ensure that you are given opportunities to show your competency through projects, assignments, case studies and problem solving situations.

The Course

It usually takes around one term to cover one unit. The following units are covered on this course:

Unit 1: Exploring Business (90 GLH)

Learners study the purposes, features, structures and operating environments of business organisations, and examine the link between innovation and business survival.

Unit 2: Research and Plan a Marketing Campaign (90 GLH)

This controlled assignment, set by Pearson gives learners knowledge of how a marketing campaign is planned and developed. They explore a range of different objectives that can be included in a marketing campaign such as increasing sales or market share, or establishing a brand image. They also explore the various stages of the process an organisation goes through when developing its campaign.

Unit 4: Managing an Event (90 GLH)

Learners work as part of a small group to plan, coordinate and manage a business or social enterprise events and evaluate the skills gained. Learners develop their teamwork, communication, time management, negotiation and problem solving skills.

Unit 9: Team Building in Business (60 GLH)

Through this practical unit, learners gain an insight into how successful businesses draw on effective teams. They are exposed to the different roles within a team and learn about the importance of establishing a shared vision when making collaborative decisions. They have lots of opportunities to work in and lead different teams and they have the opportunity to gain valuable training from a corporate team building centre in Kenya.

Unit 34 - Launch and Run an Enterprise (90GLH)

In this practical unit, learners develop a plan for an enterprise and create a marketing strategy to inform their target market about the product or service. Once the learner has stimulated the demand for the product or service, they will then launch and run the enterprise for a set period of time. The learner will draw on the knowledge, understanding and skills they have developed through studying earlier units to help make the enterprise a success.

Career Pathways

Career pathways are many and various. Business Studies and Management courses are proving very popular at university, and BTEC Business opens many opportunities in the world of work, in management, human resource management, accounts and law.



Business Diploma

Length of Course: 2 Years

Entry requirements: Four IGCSE grade Ds and above.

You must have opted for Business Core which contains the compulsory units to be allowed to take this course.

This 720 guided learning BTEC course when taken with Business Subsidiary Diploma is equivalent to 2 A levels.

How will I learn?

You will learn through a range of practical activities:

- Doing a health and safety audit in a business and feeding back to the management with a powerpoint presentation.
- Developing your Career Plan, including your CV, Linked-in profile and your personal statement.
- Practising the skills and techniques to make effective sales.

How will I be assessed?

You are continuously assessed throughout the course. For each unit international standards are laid down, in which you have to show you are competent. Your tutors will ensure that you are given opportunities to show your competency through projects, assignments, case studies and problem-solving situations. Assessment may include powerpoint presentations, practical audits, written reports or demonstrations, role play or observations of your own performance.

The Course

Depending on the recommended guided learning hours, units may take 8-16 weeks to complete.

The following units are covered over the two years:

Unit 3: Business Finance (90 GLH)

Learners develop the skills and knowledge required to analyse and interpret financial data, enabling them to assess the financial health of a business and suggest how its performance can be improved.

Unit 30 – Career Planning (60 GLH)

Learners research potential career pathways, examine current skills they have, and identify any skill gaps they may have. They create a career development plan, and consider alternative pathways to their chosen career. They also prepare job application documentation and take part in a simulated interview to develop their communication and interview skills. This unit will support them in their university applications.

Unit 30: Career Planning (60GLH)

Learners research potential career pathways, examine current skills they have and identify any skill gaps they may have. They create a career development plan, and consider alternative pathways to their chosen career. They also prepare a job application documentation and take part in a simulated interview to develop their communication and interview skills This unit will support all learners in their applications to university.

Unit 28: Sales Techniques and Processes (60GLH)

Learners acquire a detailed understanding of the techniques and processes that can be utilised to maximise sales and practice them within their own business and through role play.

Unit 7: Business Decision Making (120 GLH)

This assignment, set by Pearson gives learners knowledge of how to interpret business data and formulate appropriate decisions and solutions to business problems. Students consider business situations and scenarios where they are required to select and use appropriate evidence drawn from several sources in order to make business decisions to support a business's objectives. The learner uses appropriate business models to identify business risks and evaluate the costs and benefits of alternative solutions to a business problem.

Career Pathways

Career pathways are many and various. Business Studies and Management courses are proving to be very popular at university, and many of our students go on to study Management related degrees.



Extended Diploma in Business

Length of Course: 2 Years

Entry requirements: Four IGCSE grade Ds and above. You need to study three different units each week and to focus entirely on Business to achieve this Extended Diploma.

This 1080 guided learning hours BTEC course is equivalent to 3 A levels.

Why study these additional units?

These units will give students a real understanding of the need for thoughtful market research before starting up a business. Students learn from practical experience how to market a product or a service within a budget. They make use of their creative IT skills along with a range of media to persuade their target audience to buy their products. By the end of the two years they will have a firm foundation in marketing skills that will give them a head start on any marketing course at university.

How will I learn?

Students will learn through practical experience.

- They set up their own small businesses as part of the core course and have 5 months to carry out their market research before deciding on their products. They then market their products over a number of months. The business that makes the most money is rewarded with an Apprentice Style prize.
- They are in charge of the marketing for the school Bonfire Night.
- They market our school musical and drama events through a spectacular launch.
- They use their IT skills to make creative and original posters, tickets and flyers.

How will I be assessed?

You are continuously assessed throughout the course. For each unit international standards are laid down, in which you have to show you are competent. Your tutors will ensure that you are given opportunities to show your competency through projects, assignments, case studies and problem solving situations.

Assessment may include photos, DVDs, examples of the posters and tickets that you created and teacher observations of your practical marketing skills.

The Course

It usually takes 10 weeks to cover one unit. The following units are covered on this course:

Unit 6: Principles of Management (60GLH)

Through this controlled assignment set by Pearson, learners examine how businesses adapt their approaches to management in response to challenges in the internal and external business environment. Students gain an understanding of how the implementation of different leadership styles and theories can impact the workplace.

Unit 14: Investigating Customer Service (60GLH)

This practical unit allows learners the opportunity to investigate the role that customer service plays in the success of a business. Learners will develop communication and interpersonal skills and demonstrate effective customer service delivery in different situations.

Unit 16: Visual Merchandising (60 GLH)

Learners study and try out techniques used to visually promote the sale of products in retail outlets.

Unit 17: Digital Marketing (60GLH)

The increased use of social media has led to a whole range of different marketing opportunities. Businesses need to adopt a range of strategies to enable them to make the most of the opportunities that arise. Video blogging and the development of mobile applications are but two of the areas learners will explore.

Unit 18: Creative Promotion (60 GLH)

Learners study how creative promotion influences the buying decisions of customers, stimulates demand, creates brand personality, and promotes products and services.

Unit 23: Work Experience in Business (60GLH)

This practical unit requires learners to investigate, plan and carry out 40 hours of work-related learning in an appropriate and safe manner. Students should research a number of appropriate work experience opportunities/ internships before securing a final placement.

Unit 24: Branding (60 GLH)

Learners investigate the role of branding and explore how it is used and give recommendations for changes to a brand for a selected product.

Career Pathways

Career pathways are many and various. Business Studies and Marketing courses are proving very popular at University, and many of our students go on to study Marketing related degrees, including: Product Development; Advertising; Brand Management Marketing and Media Buying.



Chemistry

Length of course: 2 Years.

Entry requirements: Five A*- C grades with a B grade in IGCSE Chemistry. It is also helpful to have a grade C in mathematics as numeracy and mathematical skills are important in chemistry.

Why Study A Level Chemistry?

The demand for students with chemistry qualifications continues to increase. There is presently a shortage of suitably qualified chemists. The subject impinges on all aspects of our lives, including medicine, food, clothing, transport, agriculture, animals and space travel. The range of materials and our need for chemicals is ever increasing.

The Course

This course takes 2 years. During the first years, the following areas are studied:

Physical chemistry	Inorganic chemistry	Organic chemistry
Atoms, Molecules and Stoichiometry	Chemical Periodicity	Hydrocarbons
Atomic Structure	Group 2 Elements	Halogen Derivatives
Chemical Bonding	Group 7 Elements	Hydroxy Compounds
State of Matter Chemical Energetics	Nitrogen and Sulphur	Carbonyl Compounds
Electrochemistry	Carboxylic acids and their derivatives	
Equilibria	Polymerisation	
Reaction Kinetics		

In the second year, the above areas are studied to greater depth and the following areas are added; Group IV ; (transition Elements), Arenes, Nitrogen compounds.

In addition, students study three application of chemistry areas; Chemistry of life, application of Analytical Chemistry and design and Material.

Assessment

Paper	Description	Duration	%
1	Multiple Choice	1 hour	15.5%
2	Structured questions	1 hr 15 mins	23%
3	Practical paper	2 hours	11.5%
4	Structured and essay questions	2 hours	38.5%
5	Structured questions on planning, analysis and evaluation	1 hr 15 mins	11.5%

Career Pathways

With a qualification in chemistry you could go on to further or higher education, studying chemistry or work with the science-based industry such as chemical engineering, material science or biotechnology. It is essential for the medical field, pharmacy and environmental science.

Chemistry is also a well-respected subject in its own right and suitable for entry into a wider range of professions such as analytical chemistry, healthcare scientist, clinical biochemistry, forensic science, pharmacology, research scientist, toxicology, chartered certified accountant, environmental consultant, higher education lecturer, patent attorney, science writer or secondary school teacher.



Mathematics

Length of Course: 2 Years

Entry requirements: Five A*-C grades with a B grade in IGCSE Maths

Why Study A Level Mathematics?

The study of Mathematics is always in demand. It is a subject that complements a wide range of areas of study. Almost every field of study requires a foundation in A Level Maths, especially engineering, medicine, physics, management and accounting. This course aims to develop your mathematical knowledge and skills in a way which encourages confidence, satisfaction and enjoyment.

The Course

The Maths A Level is a carefully structured course and you will be expected to work consistently hard through the two years.

You will be set exercises from your textbook throughout the academic year and you will be expected to keep up-to-date with this work as it is essential to the learning of A Level Mathematics.

Assessment

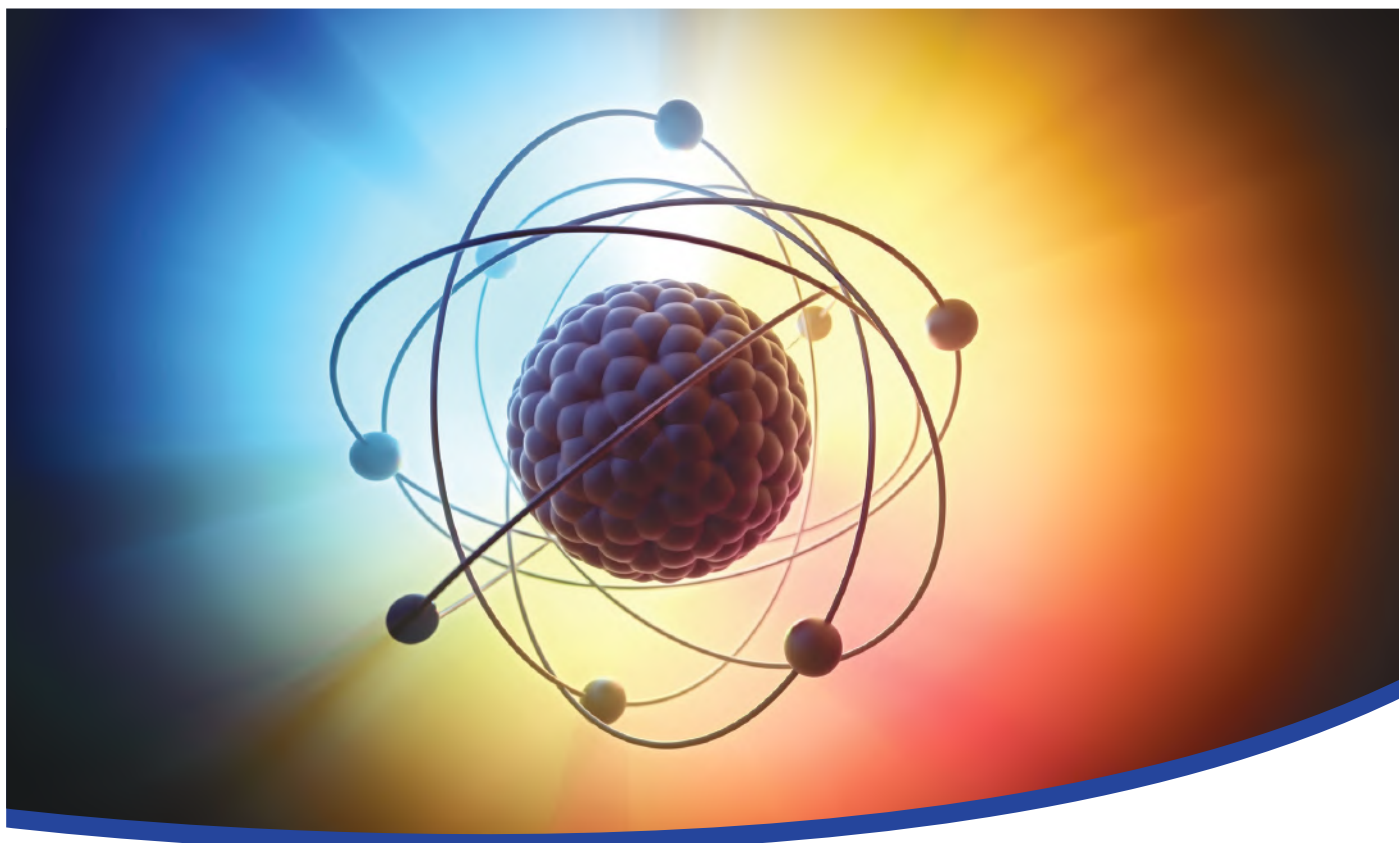
Paper	Description	Duration	%
P1	Pure Mathematics	1 hour 45 mins	30%
P3	Pure Mathematics	1 hour 45 mins	30%
S1	Statistics	1 hour 15 mins	20%
S2	Statistics	1 hour 15 mins	20%

Career Pathways

Pure Mathematics: Students wishing to study Science, Mathematics or Engineering at university are well advised to study Pure Mathematics. The syllabus extends major topic areas such as trigonometry, algebra and geometry, whilst introducing differential and integral calculus.

Statistics: Students wishing to study Mathematics, Management, Accounting, Sociology, Geography, Business Studies and Economics at University are well advised to study Statistics. The syllabus covers collecting, presenting and analysing data as well as the theory of probability, discrete and continuous distributions, correlation and regression.

Mechanics: Students wishing to study Mathematics, Physics or Engineering at University would find the study of Mechanics very useful. The syllabus covers forces, kinematics, momentum, Newton's laws of motion, energy, work and power.



Physics

Length of Course: 2 Years

Entry requirements: Five A*-C grades with a B grade in IGCSE Physics and Maths.

Why study Physics?

A Level Physics is an interesting, stimulating course for students who enjoy science and mathematics. It covers many different concepts from the structure of the atom to the building blocks of the universe.

The Course

Students studying A Level Physics become confident citizens in a technological world, being able to use IT to aid experiments and as a tool for the interpretation of experimental and theoretical results. The course includes the study of mechanics, matter oscillations and waves, electricity and magnetism, modern physics (particles, quantum and nuclear physics), and applications of physics (medical physics and telecommunications).

Assessment

Paper	Description	Duration	%
1	Multiple Choice	1 hour	15.5%
2	Structured questions on the AS syllabus	1 hr 15 mins	23%
3	Advanced Practical paper	2 hours	11.5%
4	Structured questions based on the A2 syllabus and the application of physics	2 hours	38.5%
5	Two questions of equal marks based on the practical skills of planning, analysis and evaluation	1 hr 15 mins	11.5%

Career Pathways

A qualification in physics is a valuable asset for higher education, or for the world of work. Career options range from medicine, computing, teaching, medical physics, engineering, meteorology, electronics, environmental work, finance and law.



For further information contact:

Braeburn Dar es Salaam International School
Africana / Mbezi Beach, off Bagamoyo Road
at the Africana Junction
PO Box 31158 Dar es Salaam

Telephone: +255 (0) 763 086 646
enquiries.dar@braeburn.sc.tz
dar.braeburn.com



Braeburn Dar es Salaam International School



braeburndar

