



Braeburn Schools
Summum Appeto



Braeburn Dar es Salaam International School

SIXTH FORM PROSPECTUS



Confident Individuals



Responsible Citizens



Learners Enjoying Success



Introduction

Braeburn Dar is proud to introduce its new sixth form, which offers a challenging, supportive, and friendly environment for students to achieve their full potential. The sixth form shares the same caring family atmosphere as the rest of the school, ensuring that newcomers settle in quickly. All students benefit from regular meetings with their tutors who monitor and support them in their studies. The sixth form also offers a wide range of stimulating extra-curricular activities such as the International Award, LAMDA, ABRSM exams, and Model United Nations, which are highly regarded in universities across the world. Braeburn's students are successful, not only academically but in being prepared for the challenges of life. Like the rest of the school, the sixth form will be a supportive, friendly, and caring, and all

students will be encouraged to develop into well-rounded and mature individuals. The school offers a structured programme to support each of its sixth formers to apply for the course and university that they want to attend. The sixth form area boasts a study room and a common room, along with all the facilities expected from a modern international school: a competition-sized swimming pool, playing fields for athletics, football, rugby, and cricket and a shaded basketball court. Internet access is readily available throughout the school. The science laboratories are well-equipped for modern practical A level study. The school also has a range of highly experienced sixth form teachers, and learning takes place in small supportive classes where each student is guaranteed focused teacher attention.

Why come to Braeburn?

The sixth form offers a range of options so that all students can choose a course which they can both enjoy and achieve success in. A Level courses are offered in all of the sciences and mathematics. We also offer vocational qualifications in Business which enable students to gain entry into university. All of our teachers are graduates and have a great deal of experience in the British Curriculum.

Braeburn Dar's sixth form will be supportive, friendly and caring. We want all students to 'be the best that they can be' and we will work alongside individuals to help them achieve their true potential. Students will find support in their tutors who will meet with them as part of a tutor group every day as well as making time to have individual one-to-one mentoring conversations to monitor progress. Students will be helped with their university applications and given support in developing their study skills, time management and organisational ability, especially when they first arrive in the sixth form. This is essential in helping students to settle into life in the sixth form and in making a quick and effective transition.



University Application

In the Braeburn group of schools we have a great deal of experience in placing students in their preferred university. We have a central office that works with students across the group on their university applications. We have expertise and experience in applying to universities from around the world.

What course should I choose?

A Levels

We offer A levels in the following subjects:

- Biology
- Chemistry
- Mathematics
- Physics

A level subjects are demanding, but they are ideal for students who enjoy a traditional and academic approach to their studies. Students who enjoy A levels can expect to set aside 6 hours a week of extra study per subject. They enjoy reading around a subject and they do not get unduly worried about exams.

You can choose three or four different subjects, and therefore keep your options open. The standard of work at A level is at a very high level and students who have gone onto university have said they felt very well prepared and ahead of many others who are on their courses. The sciences have a practical component.

BTEC – (The Business and Technology Education Council)

We offer BTEC Business including units in Management; Marketing; Human Resource; Law and Accounts.

BTECs are ideal for students who want to focus on one area of study as they are sure of what they want to do. They can spend 18 hours a week learning about Business, which means they are much better prepared than students who have simply studied Business as an A level.

To get the most out of BTECs you must enjoy coursework. The course is continually assessed and there are lots of on-going deadlines. You must also enjoy practical work. For example you may be expected to give powerpoint presentations, lead workshops, write reports or perform in front of a crowd. You will find this a difficult course if you are shy and retiring, as there is lots of practical group work. As a result, it is vital that you are a good team player. In addition, you need to keep up-to-date with current developments as this course is firmly based in the contemporary world of work and not in the theory of books.

Combination of A levels and BTEC

Many of our students choose to combine BTEC with A levels. As both courses are at level 3, this is easy to do.

The advantage of combining these two courses is that students don't have too many exam papers to sit at the end of the two year course, but equally they don't have too much coursework either. These students find the two years more balanced and easier to cope with.



The extended Curriculum

Our core curriculum is central to the sixth form and is compulsory for all students. Students have to attend a period a week for PSHE, which is aimed to support them in their studies and choices and to give them the opportunity to diversify and add a range of activities to their academic study. It also gets them to consider the world around them.

Research has shown that physical exercise helps to improve concentration and learning and one hour a week students will get the opportunity to try out a range of sports including:

- football
- swimming
- basketball
- athletics

In addition students are encouraged to choose Extra-Curricular Activities.

Activities that are available include:

- LAMDA (London Association of Music, Drama and Acting)
- ABRSM Music lessons
- International Award
- MUN
- World Scholars Cup
- Community service
- Roots and Shoots

Work Experience

An additional part of our core curriculum is work experience. All students are given the opportunity to do one week's work experience. This proves to be especially useful in applications to universities and in helping students to consider whether their selected career really does interest them.

Activities week

Each year, Braeburn Dar organises an activities week for the whole school giving students the opportunity to go abroad or take part in outdoor activities such as SCUBA diving.

Houses

Sixth form students remain members of the school house system and any new students will join one of the existing houses. Students are expected to join in the activities where appropriate and attend house meetings.

Leadership positions

Our sixth form students take an active part in the running of the school through the school council and through being active members of the prefect body. Along with making important decisions they play a major role in organising a wealth of social activities.

Assessment and Reporting

Our students receive feedback on their progress every half term so it is easy to identify and support anyone who is not achieving their potential. Progress is discussed with the form tutor and targets are mutually agreed and reviewed. This ensures that our students are closely monitored and supported.

Code of Conduct

As a member of the school community our sixth formers are bound by its rules and regulations. We expect all our sixth formers to be excellent role models.

At Braeburn we expect everyone to

- respect one another
- listen to each other
- support and encourage each other
- celebrate our differences
- tell the truth
- feel safe
- be punctual to class
- look for solutions not problems
- take care of the school equipment and the possessions of others
- take care of our environment
- focus on learning
- do our best at all times

Sixth form Study Room and Common Room

These only available for sixth formers.

Study periods are not free periods. We expect you to make the most of your time in school to study in them. Playing cards, watching films, sleeping or chatting are not acceptable.

The keeping of valuables in the study room is discouraged. You should be aware of security risks and make provisions accordingly. Lockable lockers should be used.

Electronic Devices

There are tablets available and internet access across the school. Nevertheless, most of our sixth formers bring their own laptops to work as we encourage you to use IT for both research and your written work.

However, if you are using the school resources, please note that you must not load any software, games or music onto the school laptops. Neither must you try to reconfigure or change the settings in any way. A full computer policy will be given to you at the start of the year and it is your responsibility to be familiar with this and to follow it at all times. If you are unsure of something, consult first. Misuse of school IT may mean you will be blocked from the internet.

Dress Code

Students must come dressed for work, otherwise termed, 'smart office'. Jeans, trainers, T-shirts, tracksuits, hats, shorts and strappy tops are unacceptable. Shirts should be tucked in and trousers should not be sagging. Suitable footwear such as black leather shoes should be worn. Trainers and flip-flops are not acceptable.

All students are expected to wear appropriate kit for Physical Education.

This should give you flexibility in outfits with regard to colour and design but retains the standards of presentation accepted and expected in the business world. The discrete use of jewellery is allowed but you are discouraged from bringing expensive items to school.

School Day

There are four lessons in the morning and two lessons in the afternoon followed by ECA time.

We place a high value on punctuality to lessons and attendance to school.

Students who do not attend school for at least 90% of the time, will not be allowed to sit their exams.

The Home - School Agreement

The sixth form will provide for you:

- Initial and continuing guidance about the courses to meet your needs.
- Appropriate teaching, setting and marking of home learning regular monitoring and discussion about your progress.
- Facilities and resources for study and the encouragement to acquire sound learning skills and habits.
- Careful and comprehensive advice and support about higher education and careers.
- A willingness to talk with yourself and your parents both at regular published meetings and whenever you request an appointment.
- A genuine concern for the welfare and development of all students. No student should ever feel that there is no-one on the staff to turn to.

What we ask of you in order to ensure your own development and success:

- You will commit to working to the best of your potential and seek help as and when it is needed.
- Respect for others and their property at all times.
- You treat the common area with due care.
- You behave in an appropriate way at all times and act as a role model to younger students.
- A high rate of attendance with an absolute minimum of absences. Holidays should not be taken during term time and all absence should be covered by a letter from your parent or guardian which should be handed to your tutor on the day of your return.
- Prompt attendance at all timetabled classes, tutorials, assemblies and core activities, including the fulfilment of all additional commitments undertaken eg. work placements and projects, community service and sport.
- A real effort to maintain good standards of work and meet the course requirements.
- The completion of all homework, projects and assignments to set deadlines.
- The systematic use of study time to follow up and consolidate work covered in class.
- You dress in a manner which is suitable for work.

How do I get a place in the sixth form?

You need to apply

- You will be interviewed
- You should receive a letter by the end of May letting you know whether your application has been successful
- You will be invited to the sixth form taster week in the middle of June
- You will be invited in for an enrolment interview at the end of August once you have your results. Your choice of course will be finalised at this interview, as it will be dependent on your results.
- You will be invited to some induction days at the start of the school year so that you can meet other new students and settle into the school.

At your enrolment interview

You will be asked for a deposit. This will be refunded when all books have been returned and the leaving form signed.

You will be placed on a six week probationary period where your choice of subject and your ability to cope are closely monitored. You will be supported in making changes if you feel you have made the wrong choices

Entry Requirements

To gain a place at Braeburn you will need to show:

- an excellent attendance and punctuality record
- a willingness to lead by example
- a willingness to learn
- a desire to contribute to the life of the whole school

You need to fill in an application form and have an interview with the Head teacher and you need to fulfil the grade requirements of the courses that you want to register for.

FAQs

What does BTEC stand for?

The Business and Technology Education Council (BTEC) was formed in 1983 through a merger of:

- Business Education Council (BEC)
- Technician Education Council (TEC)

The course is administered by Edexcel, a British registered exam board and BTECs are recognised worldwide.

What point scores do the grades relate to?

Many of the UK universities offer admission based on an overall point score. Eg. They may give you an offer with 110 points. If you are taking A levels you could gain a place with two B grades and a C grade OR one A grade, two C grades. If you are studying three of the six unit BTEC courses you would need to get one distinction and two merits or if you were doing a combination of the two courses you may get a distinction from the BTEC course and two grade Cs in your A levels.

A Level Grade	BTEC 6 Unit Award	Point Score
A*	Distinction (D*)	56
A	Distinction (D)	48
B		40
C	Merit (M)	32
D		24
E	Pass (P)	16

Which exam board do we use?

For A levels we use Cambridge International Examinations (CIE). For more information please refer to the website on www.cie.org.uk and www.edexcel.com

For BTECs we use EDEXCEL. For more information please refer to the website on: www.edexcel.com

Why study a two year A level or BTEC course?

Once you have studied a two year course at Braeburn Dar you will be able to gain acceptance onto a degree course without needing to enrol on a foundation course first.

How shall I choose what subjects to study?

Firstly, choose subjects that you are good at and that you enjoy as you will spend a considerable time in the sixth form studying them. However, you must also bear in mind your future career. Look at university prospectuses and careers leaflets to ensure that you have the correct choice of subjects for what you want to do later on.

A minimum of three A levels or three 6 unit BTECs are normally required for a university degree course. You can get onto an HND course with one A level in certain subjects.

You can have a mixture of full A levels and BTECs.

Can I change my sixth form course?

You can change your course in the first six weeks, subject to availability, after a discussion with the Deputy Head.

After half a term, however, you will be committed to stick with the course that you have chosen.

How much home learning will there be?

A lot! Expect to do a minimum of six hours per subject, per week. You will get time during the week to work in the library or the study room but you will still need to build in at least a couple of hours at home six days of the week.

In conclusion

We hope that our sixth form students will have a special relationship with each other and with staff and that the right spirit will enable you to keep everything in perspective. We trust you will be able to hold on to this and that your time in the sixth form will be one that you treasure now and in the years to come.

How is the Sixth form Different to KS4

Lessons

Expect a different style of teaching and learning. We hope that you will become more independent as learners. We will support you in researching and discovering information for yourself. For both BTEC and A level, you may need to prepare presentations for the lesson and you will find there will be more discussion than you were previously used to. In BTEC lessons you will be showing your understanding through 'doing' a lot more.

Private study

Your teachers will ask you to follow up class work with notes and assignments. How and when you choose to do this work will be up to you but deadlines must be kept.

You should, however, make sure that private study lessons during the day are used for study and not recreation.

There are two options as to where you might work:

- in the sixth form study room
- in the library

Equally you should be disciplined in working during the evenings. You will need to spend a minimum of six hours per week on each A level subject or four hours on each 6 unit BTEC that you have taken.

Daily Programme

The school day begins with registration in form rooms at 8.00am. Classes for the rest of the day are as follows:

Time	Activity
7:25am – 7:40am	Registration
7:40am – 8:40am	Lesson 1
8:40am – 9:40am	Lesson 2
9:40am – 10:00am	Break
10:00am – 11:00am	Lesson 3
11.00am – 12.00pm	Lesson 4
12:00pm – 12:45pm	Lunch
12:45pm – 1.45pm	Lesson 5
1:45pm – 2:45pm	Lesson 6
2:45pm – 4:00pm	ECAs

A level or BTEC (Business and Technology Education Council)

Choosing A level or BTEC Subjects

Students are advised to use the following criteria upon which to base their final selection of A level subjects:

- Academic interest and ability.
- Personal interest, skills and aptitudes.
- Entry requirements for degree courses or careers.
- Whether you prefer continuous coursework or exams as the key tool of assessment.
- Whether you prefer working on your own or working with others.

Do not choose an A level or a BTEC

- Because of a teacher's personality or because a close friend has selected a particular subject.
- Because of parental pressure.
- If you are not prepared to work very hard. Each 'A' level subject requires at least 6 hours of work every week for home study.
- Unless you are self motivated and ready to study at times without direction.

Before you apply

- If you decide that you wish to study A levels or BTECs it is important that you have a solid grounding at IGCSE (or equivalent) on which to build.
- A levels are much more difficult than IGCSE. They are more intensive and more demanding. They involve more reading and writing plus the ability to analyse information and apply knowledge.
- BTECs need real commitment and organisational skills to cope with all the different deadlines.
- At Braeburn Dar we would also expect students to show high standards of work and behaviour and to be a link between the school and the parents.

Bill Gates says...

"Life is not fair – get used to it

You won't make \$40,000 a year, right out of high school. You won't be a vice-president with a car phone until you earn both.

If you think your teacher is tough, wait till you get a boss.

If you mess up, it's not your parent's fault, so don't whine about your mistakes, learn from them.

The world won't care about your self-esteem. The world will expect you to accomplish something BEFORE you feel good about yourself.

Be nice to nerds. Chances are you'll end up working for one."

BTEC Subsidiary Diploma in Art and Design

To gain admittance into this course you must have a proven record of achievement within Art. You must provide a portfolio of work proving an interest in Art and Design, dedication and enthusiasm. Time keeping is an essential attribute for this course

What is this 6 unit BTEC course equivalent to? One A level.

The Course

The BTEC qualification is split into 2 modules

- A1: Skills Development (worth 66% of the qualification)
- A2: Responding to a brief (worth 33% of the qualification).

A1: Skills Development

At Braeburn we have made the decision to split the skills module into two extensive in-depth projects, allowing you to create exciting, innovative and ambitious art work for two different Art based disciplines. For both of these projects you will be assessed on the following assessment objectives:

- A1.1 Explore and develop investigation skills for informing ideas
- A1.2 Explore and develop problem solving skills
- A1.3 Explore and develop creative technical skills
- A1.4 Explore and develop professional skills and behaviours
- A1.5 Explore and develop communication skills

These projects are:

• A Point of View - Length: 2 Terms

You can choose from the following disciplines:

Fine Art Painting and related media, Fine Art Sculpture.

Brief: "Art is not what you see but what you make others see"
Edgar Degas

Art can act as a magnifying glass; it can draw people's attention to the world around them and it has the power to change

perceptions. Within this assignment you will research influential Fine Artists and their key works and discover how they were developed and inspired by the world around them. You will then work as a Fine Artist exploring the world around you, developing a concept and portray your concept through your Artwork. The starting point for your research will be 'Point of View'.

• Telling Tales - Length: 2 Terms

You can choose from the following disciplines:

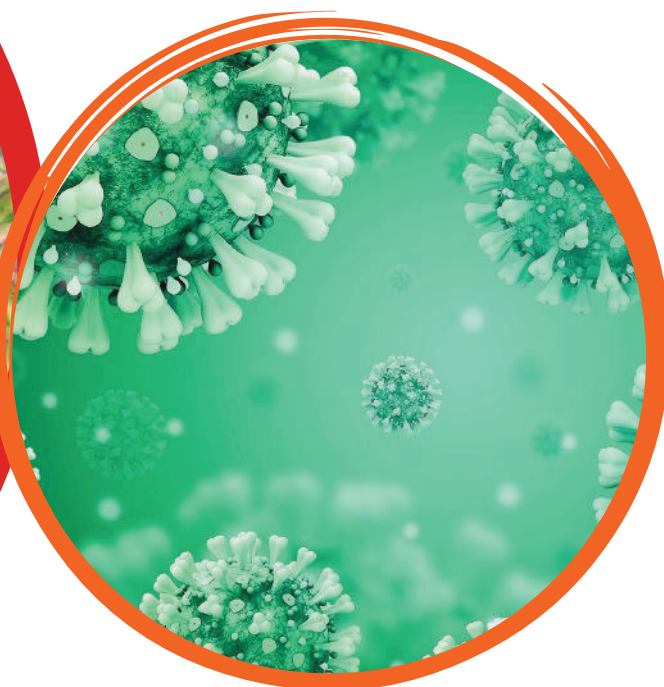
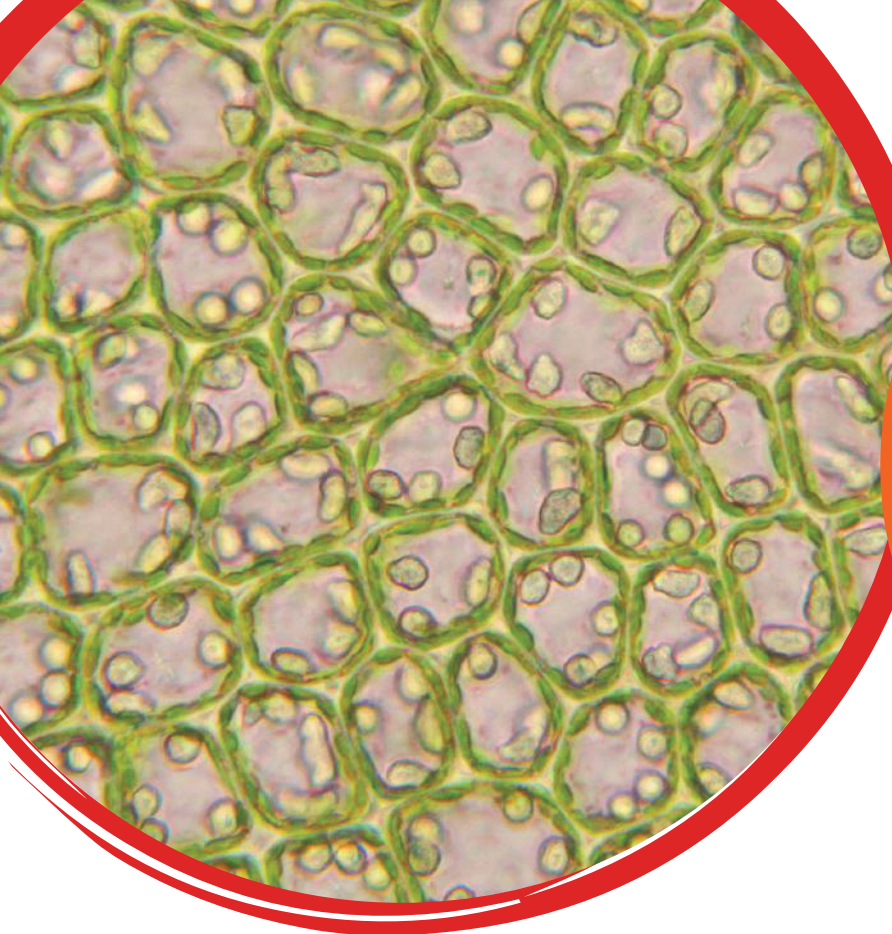
Illustration and graphic design or photo journalism.

Brief: "A picture is worth a thousand words" is an English idiom. It refers to the notion that a complex idea can be conveyed with just a single still image or that an image of a subject conveys its meaning or essence more effectively than a description does. The purpose of the image within history has been to communicate, it has the powerful ability to communicate to an audience in many languages and to people who cannot read or hear. You are an Artist/Designer who will tell a tale within one or a range of images within your chosen specialism. Previous students have worked as journalists for the year book or produced their own children's picture books or comic books.

A2: Responding to a Brief

In the art and design industry, creative practitioners respond to briefs from clients to produce creative work. Understanding client needs requires an ability to work within specific constraints to create work that meets their needs and the needs of an audience. Pearson will set a brief for the assessment unit as a Pearson Set Assignment. The brief will be broad and enable you to work in any specialism, to produce work in relation to your personal interests. This module will be assessed on the following grade boundaries.

- A2.1 Inform ideas in response to a brief
- A2.2 Use problem solving to develop a response to a brief
- A2.3 Use technical skills to develop a response to a brief
- A2.4 Use professional skills to develop a response to a brief
- A2.5 Use communication skills to develop a response to a brief



Biology

Length of course: 2 Years.

Entry requirements: Five A*- C grades with at least B grades in IGCSE Biology and Mathematics. At least a C grade in IGCSE Chemistry is also desirable.

Why Study A Level Biology?

Biology is the science of life and at no time in history has Biology been so visible, so important to human life and the future of our planet. Biology is featured in newspapers, magazines and television on a daily basis: from cells (the building blocks of life), to the global effects of deforestation.

To understand what defines a living thing, how and why it functions as it does is an amazing journey called biology – you can begin here!

The Course

The course focuses learners on development of transferable lifelong skills relevant to the increasingly technological environment they find themselves in. The objectives of the course emphasise:

- knowledge with understanding
- handling information and solving problems
- experimental skills and investigations Assessment

Paper	Description	Duration	%
1	Multiple Choice	1 hour	15.5%
2	Structured questions	1 hr 15 mins	23%
3	Practical paper	2 hours	11.5%
4	Structured and essay questions	2 hours	38.5%
5	Structured on planning, analysis and evaluation	1 hr 15 mins	11.5%

Career Pathways

A biology qualification is a valuable asset for many fields of work and higher education. Career options range across nursing, medicine, dentistry, conservation work, veterinary science, teaching, physiotherapy, radiography, psychology, forensic science, farming, museum work, agricultural engineering and biotechnology.

Business Core - Subsidiary Diploma

Length of Course: 2 Years

Entry requirements: Four IGCSE grade Ds and above.
What is this 360 guided learning hours BTEC course equivalent to? One A level.

Why Study BTEC Business?

This course in Business gives students an overall foundation from which to study a range of business modules at university. It provides a basis in understanding the theory behind businesses, gives students the opportunity to study a range of local and international businesses and develops skills in human resource management, people in organisations and operations management as well as the external influences affecting businesses. Students put their knowledge into practice when they compete against each other to make the most sales, once they have started their own business. Students also explore the objectives and strategies which are employed by successful business organisations through this practical and work-related vocational course.

How will I learn?

The course is about the practical development of business knowledge and skills. You learn, and are assessed, by doing. This involves you in researching information, working with others, and presenting your material effectively. While there is some formal teaching, the emphasis is on individual and group work using assignments and realistic work situations. You will learn by completing projects and assignments that are based on realistic workplace situations, activities and demands. As a result you will develop a range of specialist skills and knowledge.

How will I be assessed?

You are continuously assessed throughout the course. For each unit international standards are laid down, in which you have to show you are competent. Your tutors will ensure that you are given opportunities to show your competency through projects, assignments, case studies and problem solving situations.

The Course

It usually takes around one term to cover one unit. The following units are covered on this course:

Unit 1: Exploring Business (90 GLH)

Learners study the purposes, features, structures and operating environments of business organisations, and examine the link between innovation and business survival.

Unit 2: Research and Plan a Marketing Campaign (90 GLH)

This controlled assignment, set by Pearson gives learners knowledge of how a marketing campaign is planned and developed. They explore a range of different objectives that can be included in a marketing campaign such as increasing sales or market share, or establishing a brand image. They also explore the various stages of the process an organisation goes through when developing its campaign.

Unit 4: Managing an Event (90 GLH)

Learners work as part of a small group to plan, coordinate and manage a business or social enterprise events and evaluate the skills gained. Learners develop their teamwork, communication, time management, negotiation and problem solving skills.

Unit 9: Team Building in Business (60 GLH)

Through this practical unit, learners gain an insight into how successful businesses draw on effective teams. They are exposed to the different roles within a team and learn about the importance of establishing a shared vision when making collaborative decisions. They have lots of opportunities to work in and lead different teams and they have the opportunity to gain valuable training from a corporate team building centre in Kenya.

Unit 34 - Launch and Run an Enterprise (90GLH)

In this practical unit, learners develop a plan for an enterprise and create a marketing strategy to inform their target market about the product or service. Once the learner has stimulated the demand for the product or service, they will then launch and run the enterprise for a set period of time. The learner will draw on the knowledge, understanding and skills they have developed through studying earlier units to help make the enterprise a success.

Career Pathways

Career pathways are many and various. Business Studies and Management courses are proving very popular at university, and BTEC Business opens many opportunities in the world of work, in management, human resource management, accounts and law.



Business Diploma

Length of Course: 2 Years

Entry requirements: Four IGCSE grade Ds and above.
You must have opted for Business Core which contains the compulsory units to be allowed to take this course.

This 720 guided learning BTEC course when taken with Business Subsidiary Diploma is equivalent to 2 A levels.

How will I learn?

You will learn through a range of practical activities:

- Doing a health and safety audit in a business and feeding back to the management with a powerpoint presentation.
- Developing your Career Plan, including your CV, Linked-in profile and your personal statement.
- Practising the skills and techniques to make effective sales.

How will I be assessed?

You are continuously assessed throughout the course. For each unit international standards are laid down, in which you have to show you are competent. Your tutors will ensure that you are given opportunities to show your competency through projects, assignments, case studies and problem-solving situations. Assessment may include powerpoint presentations, practical audits, written reports or demonstrations, role play or observations of your own performance.

The Course

Depending on the recommended guided learning hours, units may take 8-16 weeks to complete.

The following units are covered over the two years:

Unit 3: Business Finance (90 GLH)

Learners develop the skills and knowledge required to analyse and interpret financial data, enabling them to assess the financial health of a business and suggest how its performance can be improved.

Unit 30 – Career Planning (60 GLH)

Learners research potential career pathways, examine current skills they have, and identify any skill gaps they may have. They create a career development plan, and consider alternative pathways to their chosen career. They also prepare job application documentation and take part in a simulated interview to develop their communication and interview skills. This unit will support them in their university applications.

Unit 30: Career Planning (60GLH)

Learners research potential career pathways, examine current skills they have and identify any skill gaps they may have. They create a career development plan, and consider alternative pathways to their chosen career. They also prepare a job application documentation and take part in a simulated interview to develop their communication and interview skills. This unit will support all learners in their applications to university.

Unit 28: Sales Techniques and Processes (60GLH)

Learners acquire a detailed understanding of the techniques and processes that can be utilised to maximise sales and practice them within their own business and through role play.

Unit 7: Business Decision Making (120 GLH)

This assignment, set by Pearson gives learners knowledge of how to interpret business data and formulate appropriate decisions and solutions to business problems. Students consider business situations and scenarios where they are required to select and use appropriate evidence drawn from several sources in order to make business decisions to support a business's objectives. The learner uses appropriate business models to identify business risks and evaluate the costs and benefits of alternative solutions to a business problem.

Career Pathways

Career pathways are many and various. Business Studies and Management courses are proving to be very popular at university, and many of our students go on to study Management related degrees.



Extended Diploma in Business

Length of Course: 2 Years

Entry requirements: Four IGCSE grade Ds and above. You need to study three different units each week and to focus entirely on Business to achieve this Extended Diploma.

This 1080 guided learning hours BTEC course is equivalent to 3 A levels.

Why study these additional units?

These units will give students a real understanding of the need for thoughtful market research before starting up a business. Students learn from practical experience how to market a product or a service within a budget. They make use of their creative IT skills along with a range of media to persuade their target audience to buy their products. By the end of the two years they will have a firm foundation in marketing skills that will give them a head start on any marketing course at university.

How will I learn?

Students will learn through practical experience.

- They set up their own small businesses as part of the core course and have 5 months to carry out their market research before deciding on their products. They then market their products over a number of months. The business that makes the most money is rewarded with an Apprentice Style prize.
- They are in charge of the marketing for the school Bonfire Night.
- They market our school musical and drama events through a spectacular launch.
- They use their IT skills to make creative and original posters, tickets and flyers.

How will I be assessed?

You are continuously assessed throughout the course. For each unit international standards are laid down, in which you have to show you are competent. Your tutors will ensure that you are given opportunities to show your competency through projects, assignments, case studies and problem solving situations.

Assessment may include photos, DVDs, examples of the posters and tickets that you created and teacher observations of your practical marketing skills.

The Course

It usually takes 10 weeks to cover one unit. The following units are covered on this course:

Unit 6: Principles of Management (60GLH)

Through this controlled assignment set by Pearson, learners examine how businesses adapt their approaches to management in response to challenges in the internal and external business environment. Students gain an understanding of how the implementation of different leadership styles and theories can impact the workplace.

Unit 14: Investigating Customer Service (60GLH)

This practical unit allows learners the opportunity to investigate the role that customer service plays in the success of a business. Learners will develop communication and interpersonal skills and demonstrate effective customer service delivery in different situations.

Unit 16: Visual Merchandising (60 GLH)

Learners study and try out techniques used to visually promote the sale of products in retail outlets.

Unit 17: Digital Marketing (60GLH)

The increased use of social media has led to a whole range of different marketing opportunities. Businesses need to adopt a range of strategies to enable them to make the most of the opportunities that arise. Video blogging and the development of mobile applications are but two of the areas learners will explore.

Unit 18: Creative Promotion (60 GLH)

Learners study how creative promotion influences the buying decisions of customers, stimulates demand, creates brand personality, and promotes products and services.

Unit 23: Work Experience in Business (60GLH)

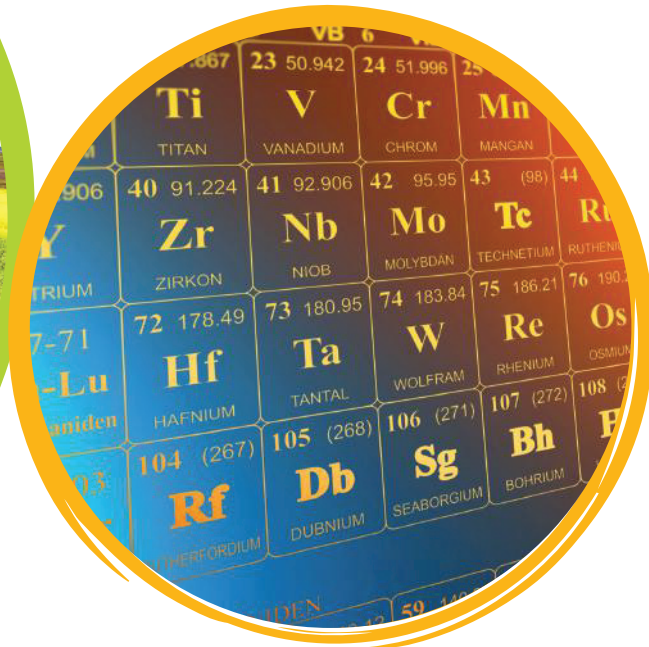
This practical unit requires learners to investigate, plan and carry out 40 hours of work-related learning in an appropriate and safe manner. Students should research a number of appropriate work experience opportunities/ internships before securing a final placement.

Unit 24: Branding (60 GLH)

Learners investigate the role of branding and explore how it is used and give recommendations for changes to a brand for a selected product.

Career Pathways

Career pathways are many and various. Business Studies and Marketing courses are proving very popular at University, and many of our students go on to study Marketing related degrees, including: Product Development; Advertising; Brand Management Marketing and Media Buying.



Chemistry

Length of course: 2 Years.

Entry requirements: Five A*- C grades with a B grade in IGCSE Chemistry. It is also helpful to have a grade C in mathematics as numeracy and mathematical skills are important in chemistry.

The Course

This course takes 2 years. During the first years, the following areas are studied:

Physical chemistry	Inorganic chemistry	Organic chemistry
Atoms, Molecules and Stoichiometry	Chemical Periodicity	Hydrocarbons
Atomic Structure	Group 2 Elements	Halogen Derivatives
Chemical Bonding	Group 7 Elements	Hydroxy Compounds
State of Matter Chemical Energetics	Nitrogen and Sulphur	Carbonyl Compounds
Electrochemistry	Carboxylic acids and their derivatives	
Equilibria	Polymerisation	
Reaction Kinetics		

In the second year, the above areas are studied to greater depth and the following areas are added; Group IV ; (transition Elements), Arenes, Nitrogen compounds.

Why Study A Level Chemistry?

The demand for students with chemistry qualifications continues to increase. There is presently a shortage of suitably qualified chemists. The subject impinges on all aspects of our lives, including medicine, food, clothing, transport, agriculture, animals and space travel. The range of materials and our need for chemicals is ever increasing.

In addition, students study three application of chemistry areas; Chemistry of life, application of Analytical Chemistry and design and Material.

Assessment

Paper	Description	Duration	%
1	Multiple Choice	1 hour	15.5%
2	Structured questions	1 hr 15 mins	23%
3	Practical paper	2 hours	11.5%
4	Structured and essay questions	2 hours	38.5%
5	Structured questions on planning, analysis and evaluation	1 hr 15 mins	11.5%

Career Pathways

With a qualification in chemistry you could go on to further or higher education, studying chemistry or work with the science-based industry such as chemical engineering, material science or biotechnology. It is essential for the medical field, pharmacy and environmental science.

Chemistry is also a well-respected subject in its own right and suitable for entry into a wider range of professions such as analytical chemistry, healthcare scientist, clinical biochemistry, forensic science, pharmacology, research scientist, toxicology, chartered certified accountant, environmental consultant, higher education lecturer, patent attorney, science writer or secondary school teacher.

Length of Course: 2 Years

Entry requirements: Though it is advisable to have taken Computer Science at IGCSE level, it is not a prerequisite for the A-Level Computer Science course. However, students need a grade B in both Mathematics and Physics.

Why Study A Level Computer Science?

Computer science is a dynamic and rapidly growing area that has become an integral part of the world that we live in today.

Having a degree in this field will provide you with a deep understanding of theories and emerging technologies. When applied in an interdisciplinary fashion, students can also draw on their other areas of interest such as biology, business, cyber security, economics, engineering, information assurance, languages and linguistics, mathematics, physics, public policy, etc., to address a wider range of complex issues.

Assessment

Paper	Description	Duration	%
1	Theory This paper seeks to assess the candidate's understanding of a range of topics, namely, data representation, communication technology, logic gates, computer architecture, database modelling, security and ethics.	1hr 30mins	25%
2	Programming and Problem-solving This programming component of the exam assesses the candidate's ability to design an algorithm, create a programming solution to a problem and create a program using basic programming constructs	2hrs	25%
3	Advanced Theory The theoretical component addressed on this paper, would examine the candidate's advanced knowledge on the same topics assessed on paper 1. Including monitoring and control systems.	1hr 30mins	25%
4	Further Problem-solving and Programming Skills. The problem-solving skills assessed on this written assessment is further programming skills, file handling, algorithm designs method and software development	2hrs	25%



Physics

Length of Course: 2 Years

Entry requirements: Five A*-C grades with a B grade in IGCSE Physics and Maths.

Why study Physics?

A Level Physics is an interesting, stimulating course for students who enjoy science and mathematics. It covers many different concepts from the structure of the atom to the building blocks of the universe.

The Course

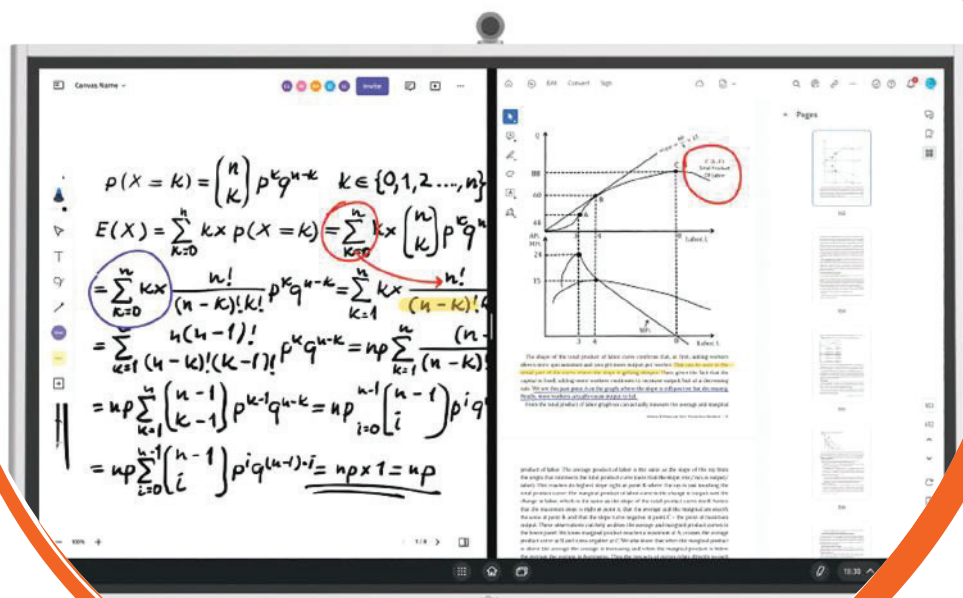
Students studying A Level Physics become confident citizens in a technological world, being able to use IT to aid experiments and as a tool for the interpretation of experimental and theoretical results. The course includes the study of mechanics, matter oscillations and waves, electricity and magnetism, modern physics (particles, quantum and nuclear physics), and applications of physics (medical physics and telecommunications).

Assessment

Paper	Description	Duration	%
1	Multiple Choice	1 hour	15.5%
2	Structured questions on the AS syllabus	1 hr 15 mins	23%
3	Advanced Practical paper	2 hours	11.5%
4	Structured questions based on the A2 syllabus and the application of physics	2 hours	38.5%
5	Two questions of equal marks based on the practical skills of planning, analysis and evaluation	1 hr 15 mins	11.5%

Career Pathways

A qualification in physics is a valuable asset for higher education, or for the world of work. Career options range from medicine, computing, teaching, medical physics, engineering, meteorology, electronics, environmental work, finance and law.



Mathematics

Length of Course: 2 Years

Entry requirements: Five A*-C grades with a B grade in IGCSE Maths

Why Study A Level Mathematics?

The study of Mathematics is always in demand. It is a subject that complements a wide range of areas of study. Almost every field of study requires a foundation in A Level Maths, especially engineering, medicine, physics, management and accounting. This course aims to develop your mathematical knowledge and skills in a way which encourages confidence, satisfaction and enjoyment.

The Course

The Maths A Level is a carefully structured course and you will be expected to work consistently hard through the two years.

You will be set exercises from your textbook throughout the academic year and you will be expected to keep up-to-date with this work as it is essential to the learning of A Level Mathematics.

Assessment

Paper	Description	Duration	%
P1	Pure Mathematics	1 hour 45 mins	30%
P3	Pure Mathematics	1 hour 45 mins	30%
S1	Statistics	1 hour 15 mins	20%
S2	Statistics	1 hour 15 mins	20%

Career Pathways

Pure Mathematics: Students wishing to study Science, Mathematics or Engineering at university are well advised to study Pure Mathematics. The syllabus extends major topic areas such as trigonometry, algebra and geometry, whilst introducing differential and integral calculus.

Statistics: Students wishing to study Mathematics, Management, Accounting, Sociology, Geography, Business Studies and Economics at University are well advised to study Statistics. The syllabus covers collecting, presenting and analysing data as well as the theory of probability, discrete and continuous distributions, correlation and regression.

Mechanics: Students wishing to study Mathematics, Physics or Engineering at University would find the study of Mechanics very useful. The syllabus covers forces, kinematics, momentum, Newton's laws of motion, energy, work and power.



For further information contact:

Braeburn Dar es Salaam International School
Africana/Mbezi Beach, off Bagamoyo Road at the Africana Junction
PO Box 31158 Dar es Salaam

Telephone:
+255 (0) 763 086 646
enquiries.dar@braeburn.sc.tz
dar.braeburn.com



Pearson
BTEC

Approved Center



Cambridge Assessment
International Education



@BraeburnSchools



Braeburn Group of Schools



@Braeburn_Group